



# GMT MONTHLY MEMBERSHIP PROGRESS REPORT

Results as of: 8/31/2019

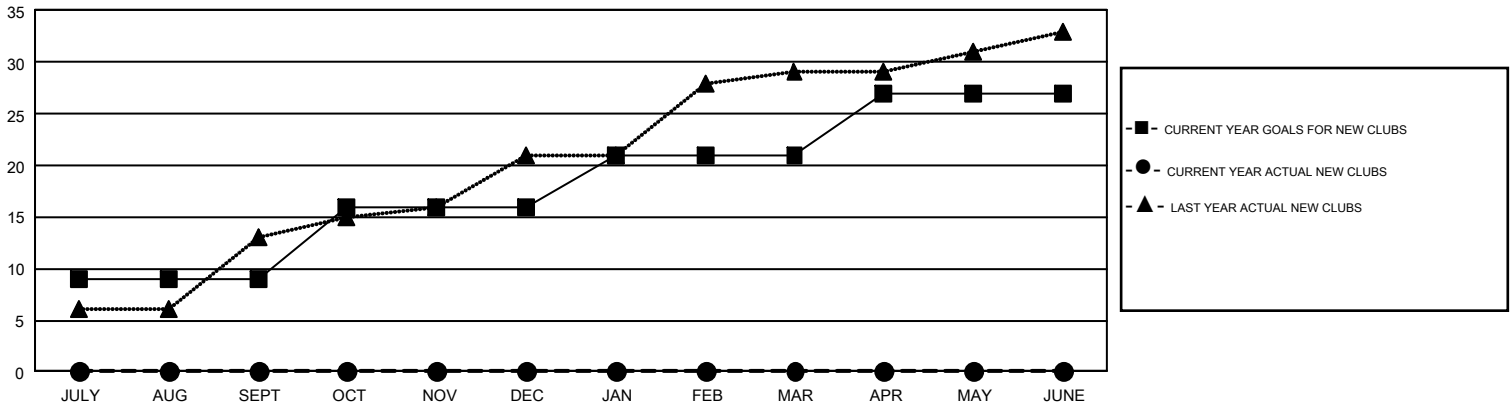
## GMT Constitutional Area 6, Group F

GMT: OPEN

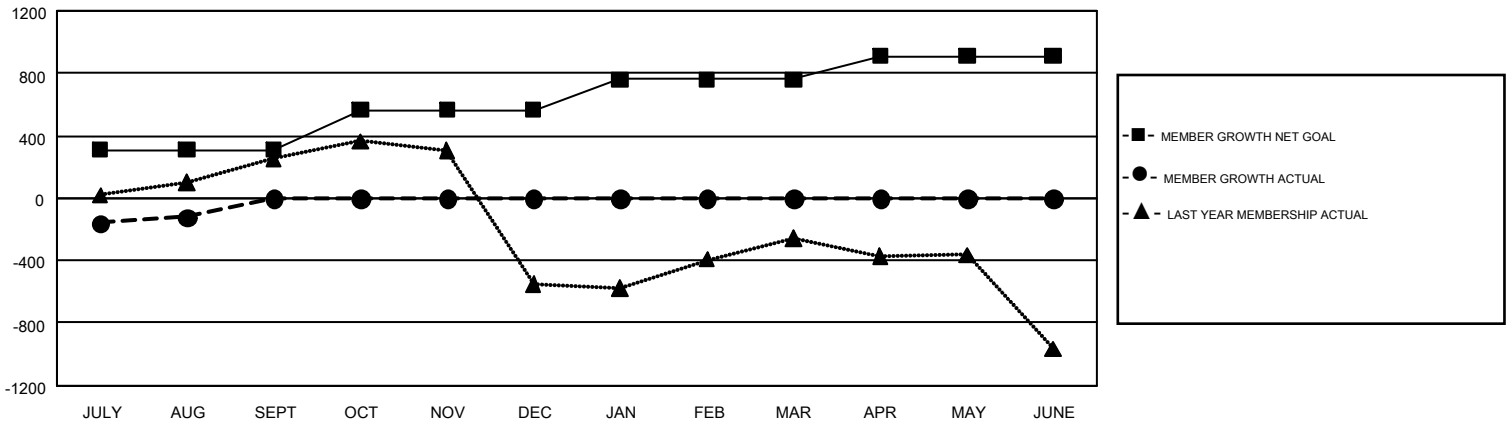
REPORT DOES NOT INCLUDE CLUBS IN UNDISTRICTED AREAS.

Clubs				Members			
RESULTS FOR 2019-2020				RESULTS FOR 2019-2020			
QUARTER	NEW CLUB GOAL	NEW CLUBS	DROPPED CLUBS	QUARTER	MEMBER GROWTH NET GOAL	MEMBER GROWTH ACTUAL	DROPPED MEMBERS ACTUAL (including transfers)
JULY/AUG/SEPT	9	0	4	JULY/AUG/SEPT	310	405	444
OCT/NOV/DEC	7	0	0	OCT/NOV/DEC	255	0	0
JAN/FEB/MAR	5	0	0	JAN/FEB/MAR	195	0	0
APR/MAY/JUNE	6	0	0	APR/MAY/JUNE	150	0	0

GOALS AND ACTUAL NEW CLUBS CUMULATIVE



GOALS AND ACTUAL MEMBERS CUMULATIVE



DROPPED CLUBS: 4	70 CLUBS OF 416 ADDED 1 OR MORE NEW MEMBERS	<b>GENDER DISTRIBUTION</b>
<b>DROPPED MEMBERS</b>		MALE                    11,794 (78.77%)
DECEASED                    4		FEMALE                    3,179 (21.23%)
CLUB CANCELLED                59	<a href="#">CLICK HERE FOR CUMULATIVE MEMBERSHIP DATA</a>	TOTAL FAMILY UNIT MEMBERS                    4,035
OTHER                            380		FAMILY MEMBERS PAYING HALF DUES                    2,435
<b>TOTAL                            443</b>		